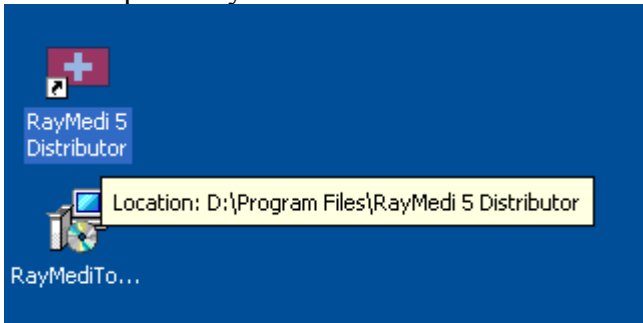


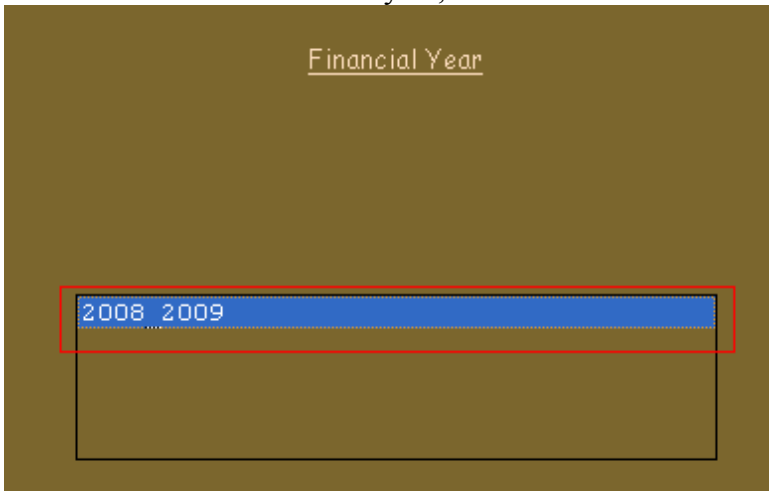
Year end process – DE

To run the year end process please follow the below steps,

1. Open “RayMedi 5 Distributor” link in desktop,



Double click on the financial year,



A login dialog box with a rainbow-colored header bar. The dialog contains the following elements:

- User Id :** A dropdown menu with the text "SUPERUSER" and a downward arrow.
- Password :** A text input field containing "*****".
- SUPER:** Text displayed in red below the password field.
- Buttons:** Three buttons are located on the right side: "Ok", "Close", and "Password".
- Footer:** A dark blue bar at the bottom contains the text "Tuesday, March 24, 2009" on the left and "09:35:36" on the right.

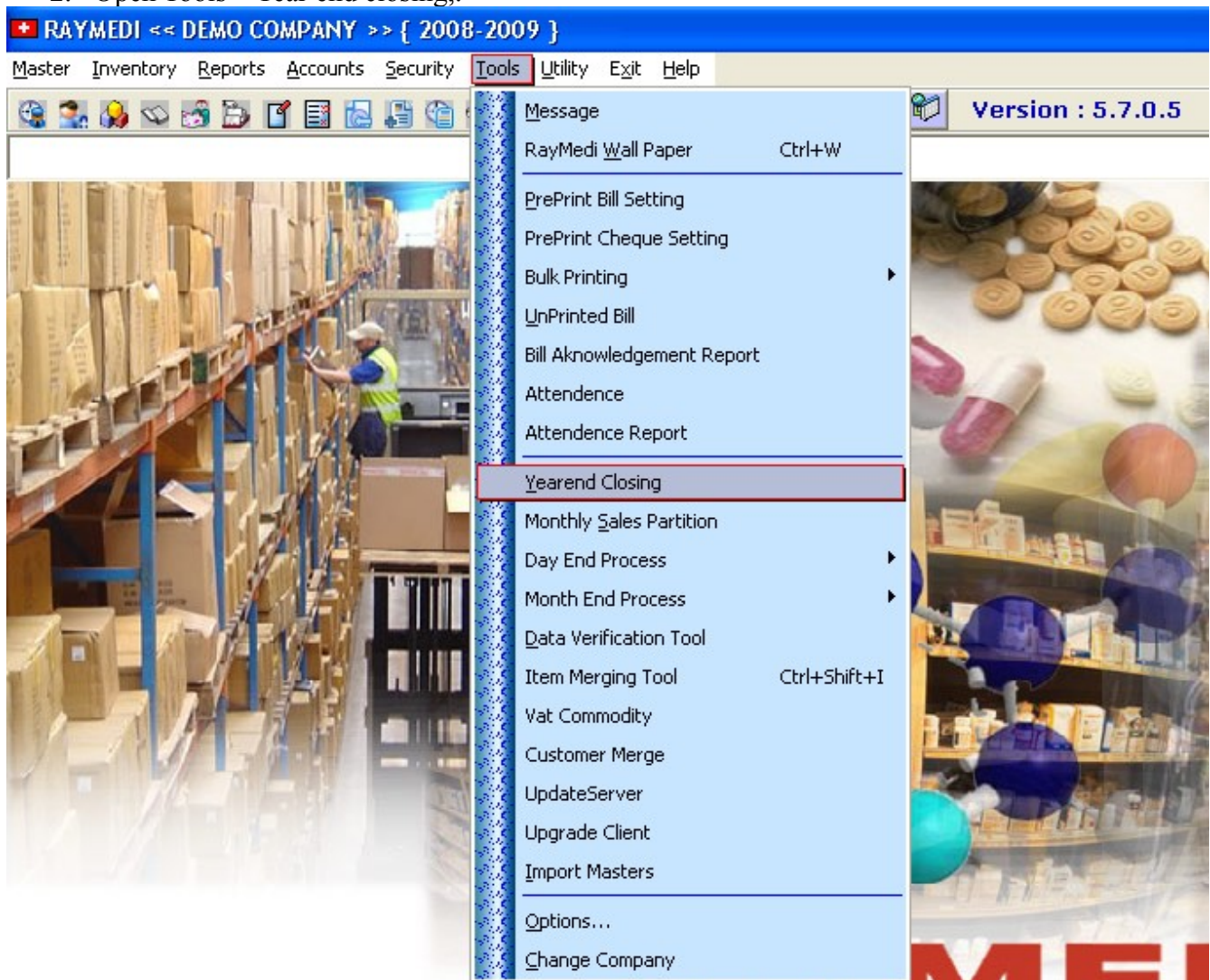
Double click or Press Enter on Company name,

A software interface with a rainbow-colored header bar. The main content area features a window titled "DEMO COMPANY - DEMO" with a grey interior. Below this window is a row of function key shortcuts:

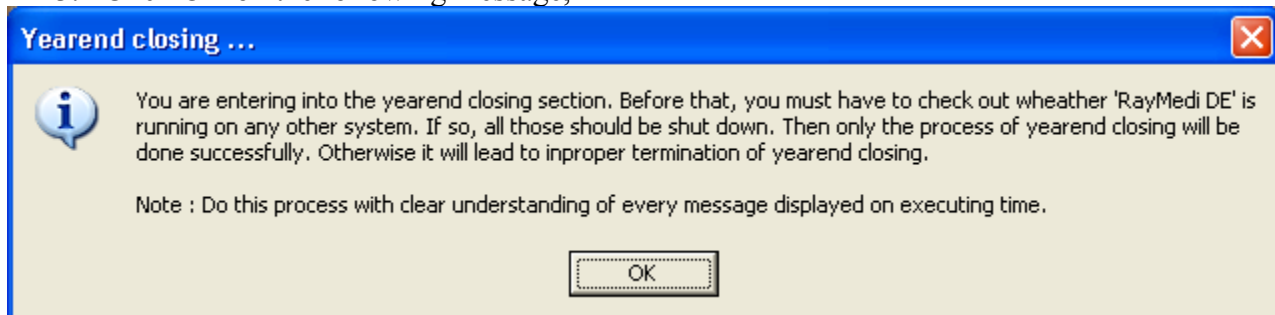
- F2-New (with a plus icon)
- F3-Modify (with a pencil icon)
- F4-Delete (with a red X icon)
- F5-View (with a magnifying glass icon)
- F6-Exit (with a red X icon)

At the bottom of the interface, a dark blue bar contains the text "+ RayMedi Is now Online."

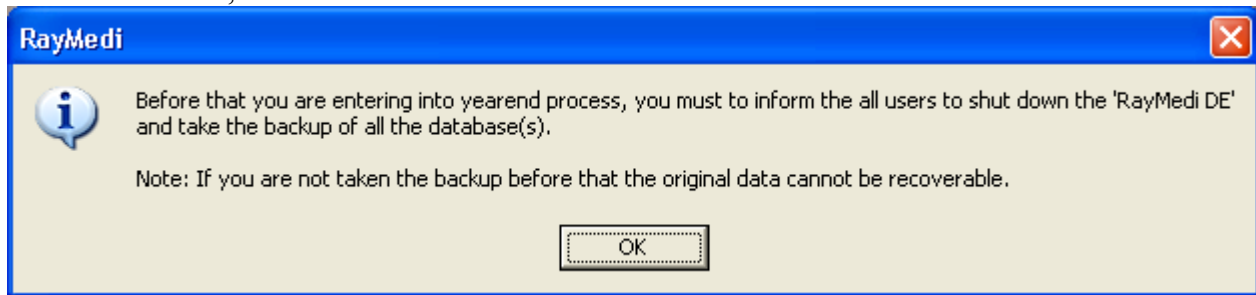
2. Open Tools – Year end closing.



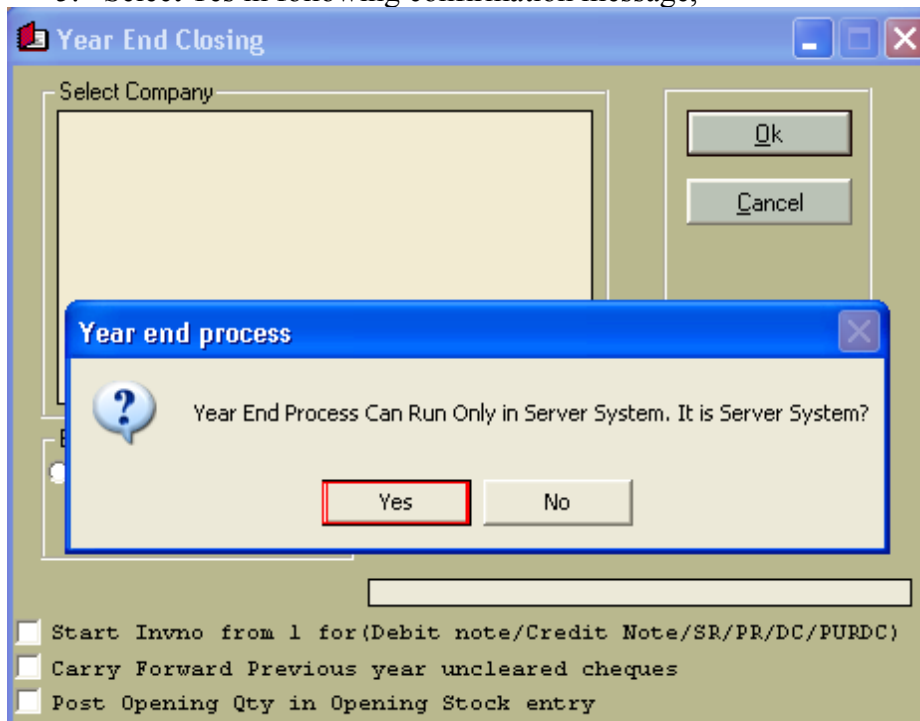
3. Click OK on the following message,



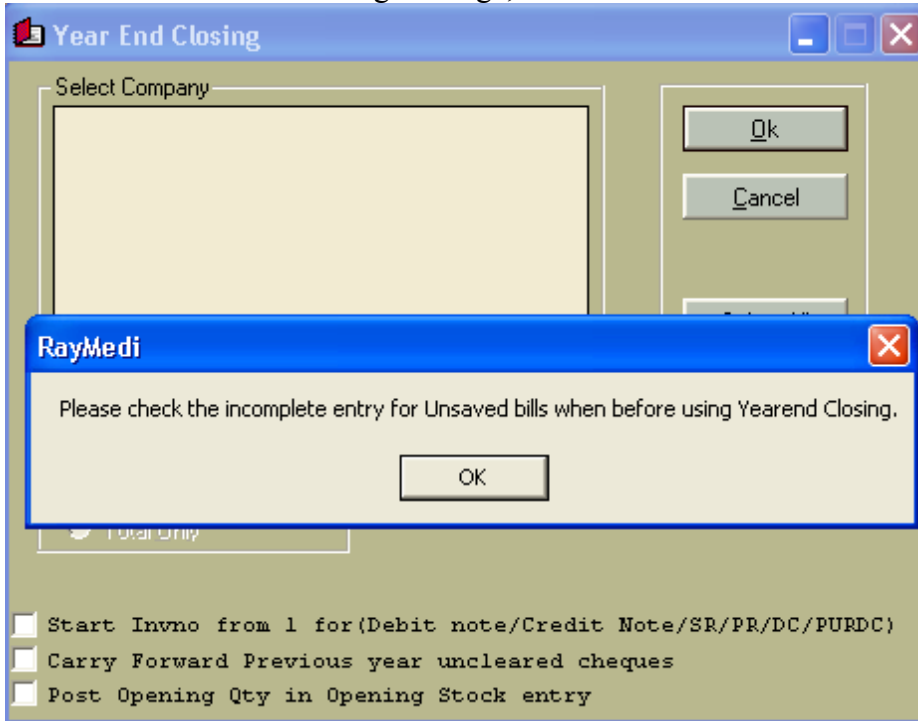
4. Click OK,



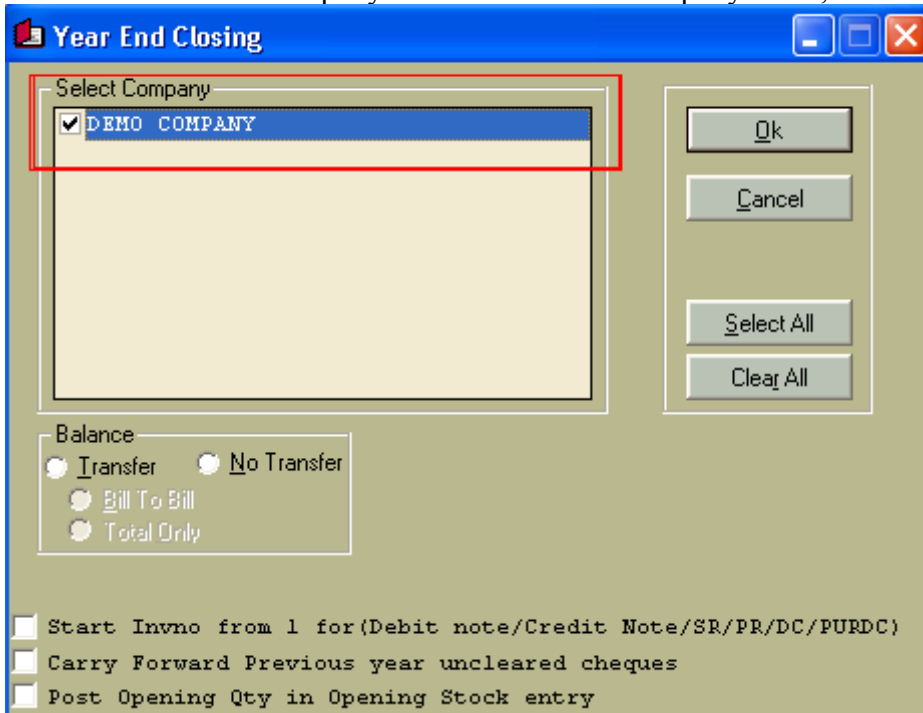
5. Select Yes in following confirmation message,



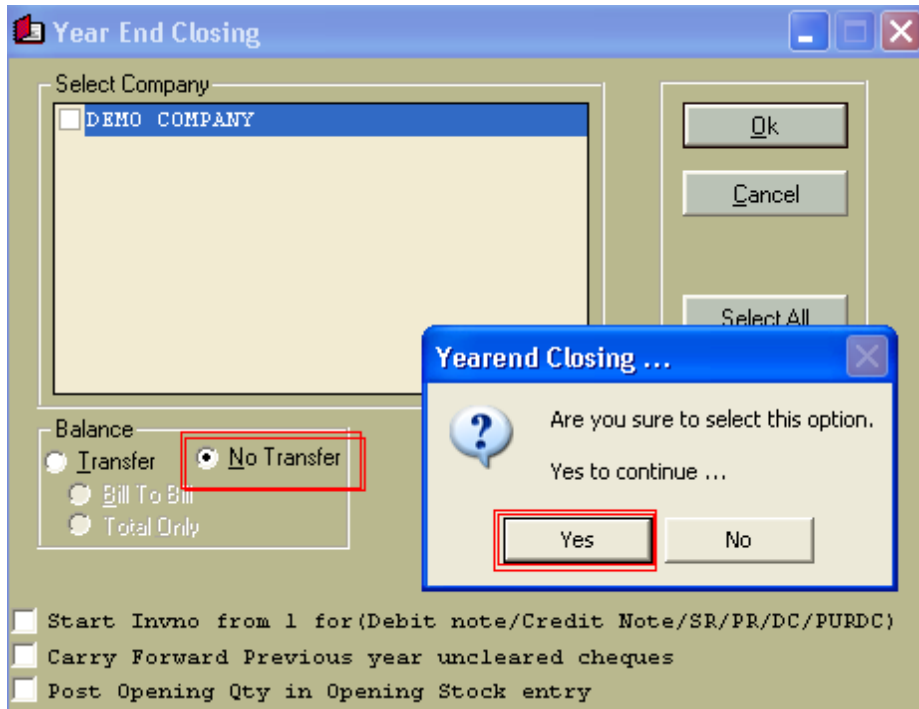
6. Click Ok on following message,



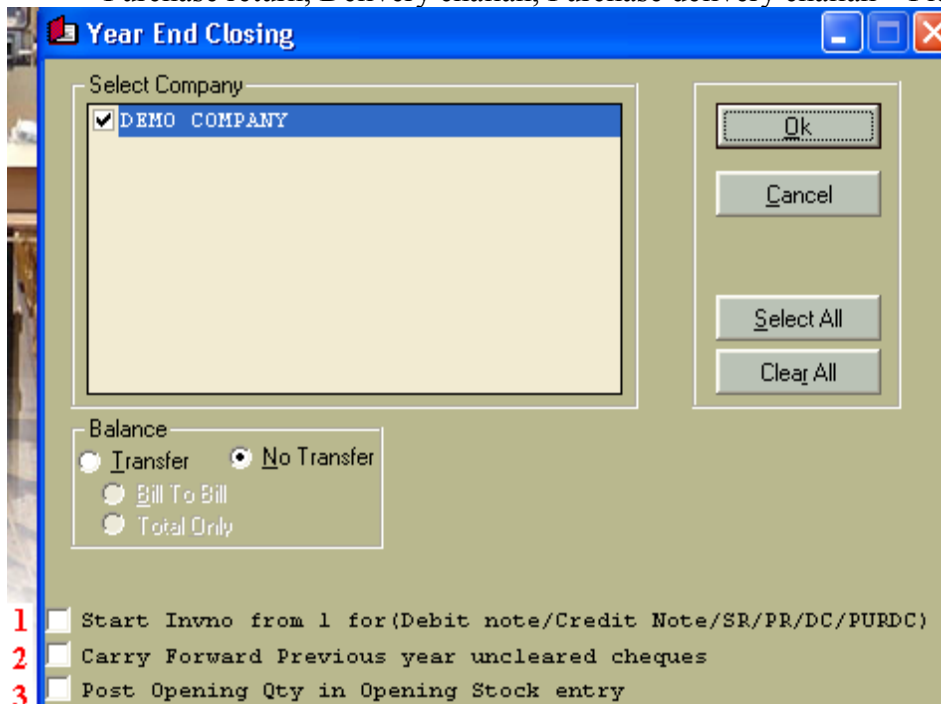
7. Click on the company name and tick the company name,



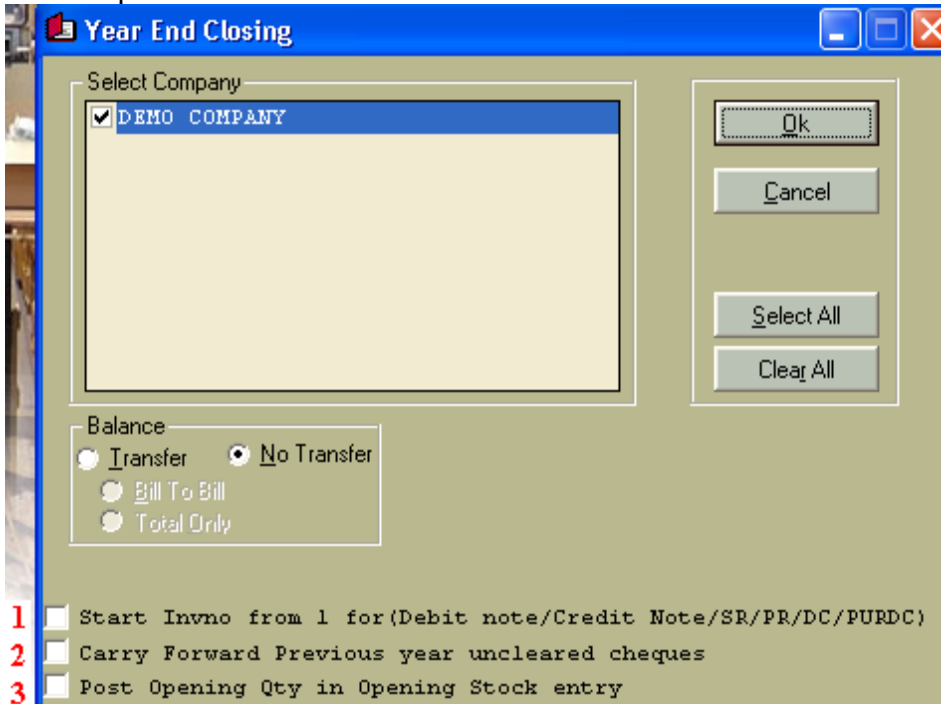
8. If you want to do year end with accounts, Select YES. If you will do the accounts year end later, Can select No Transfer



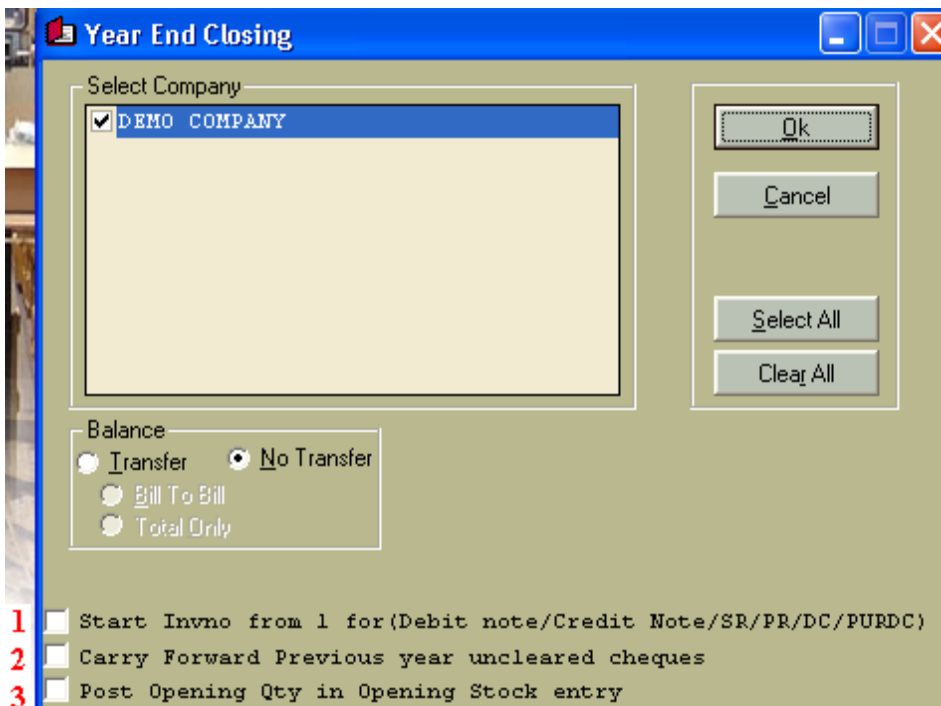
9. If you want to start the transaction numbers from 1 for Debit note, Credit note, Sales return, Purchase return, Delivery challan, Purchase delivery challan – Please tick the



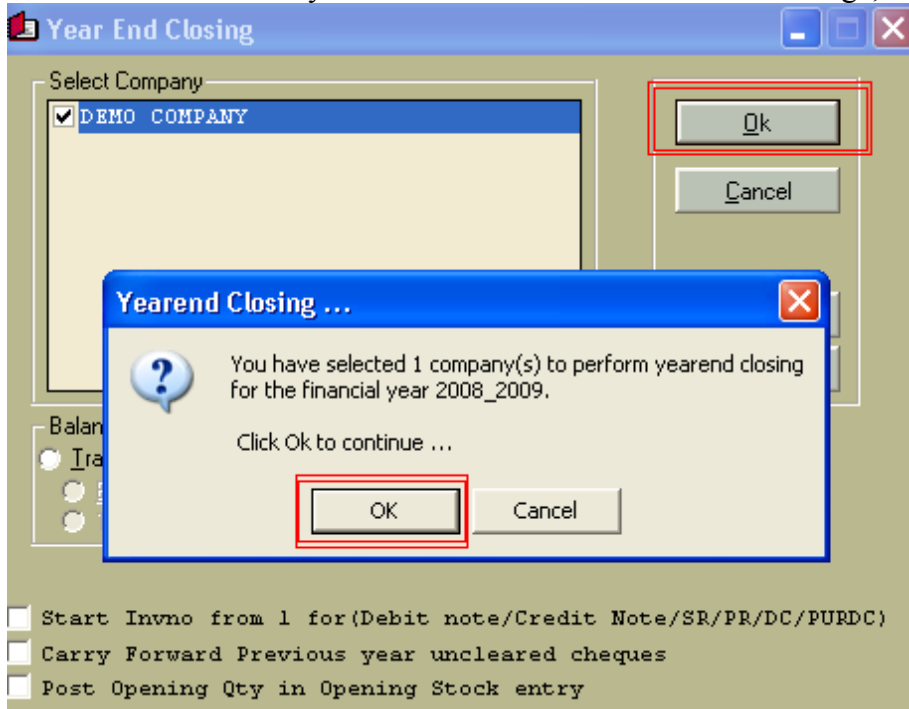
10. If you want to transfer the Uncleared cheques to 2009-2010 financial year, Tick the second option



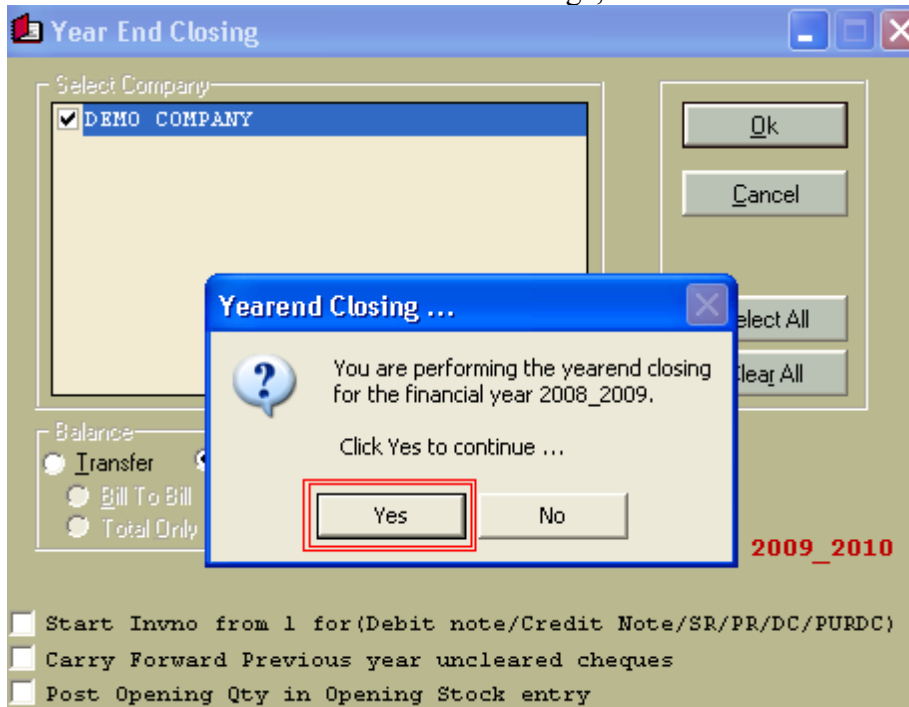
11. Please don't select the third option,



12. Click Ok in the year end window and confirmation message,



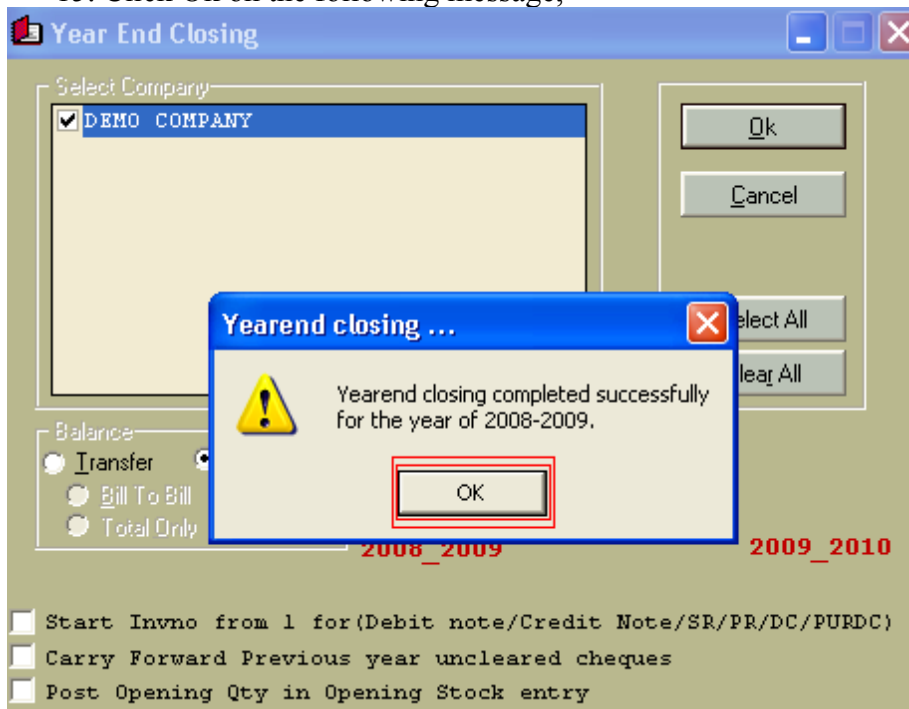
13. Click Yes in the confirmation message,



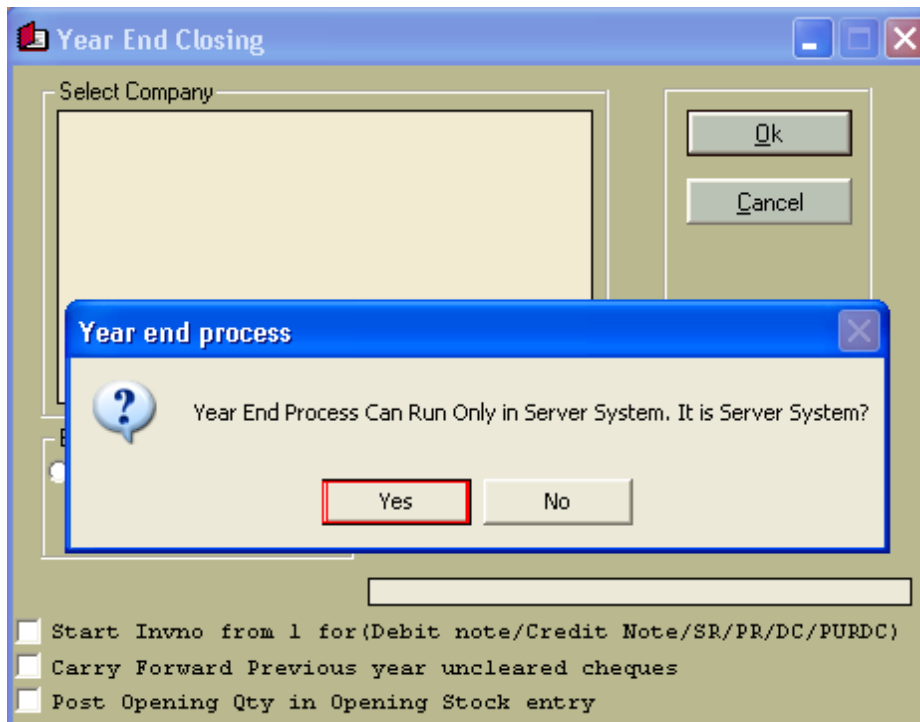
14. Wait till the process is complete,



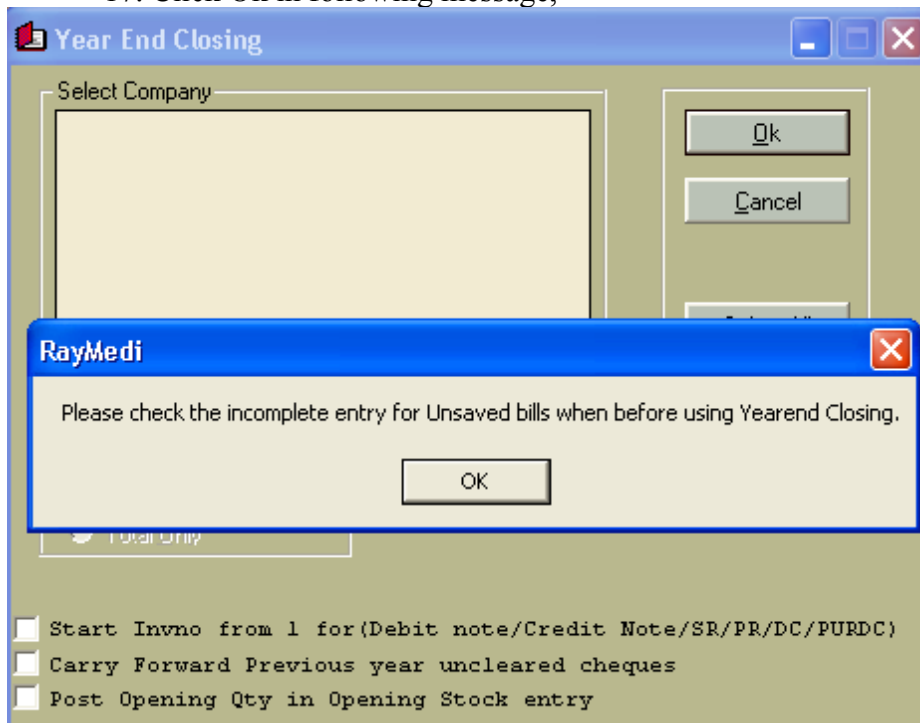
15. Click Ok on the following message,



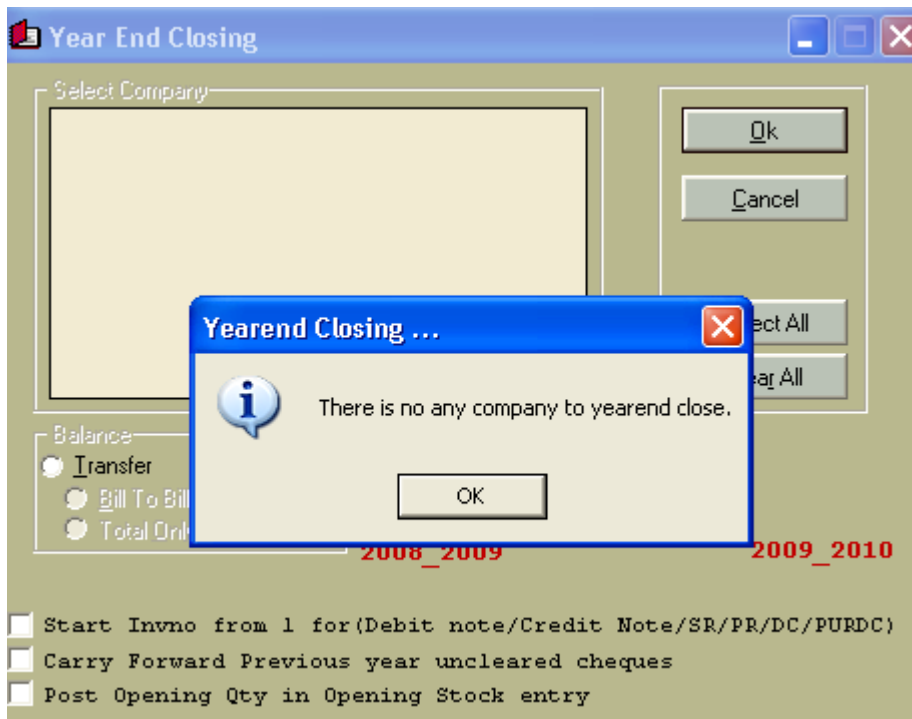
16. Click Yes in the following message,



17. Click Ok in following message,

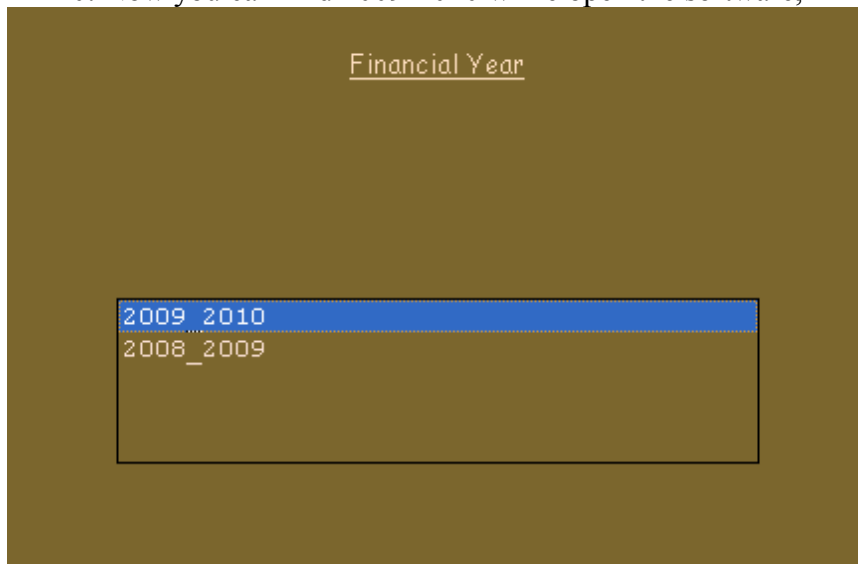


18. Click Ok on the following message,



19. Close the Year end window and DE by click Exit – Yes

20. Now you can find 2009-2010 while open the software,



Year end is completed and now you can use the software with 2009-2010 financial year, We wish you all success in this financial year 😊

any doubts in above, Please call to +91 44 42237900 or send mail to techsupport@gofrugaltech.com

by,
GoFrugal Techsupport Team